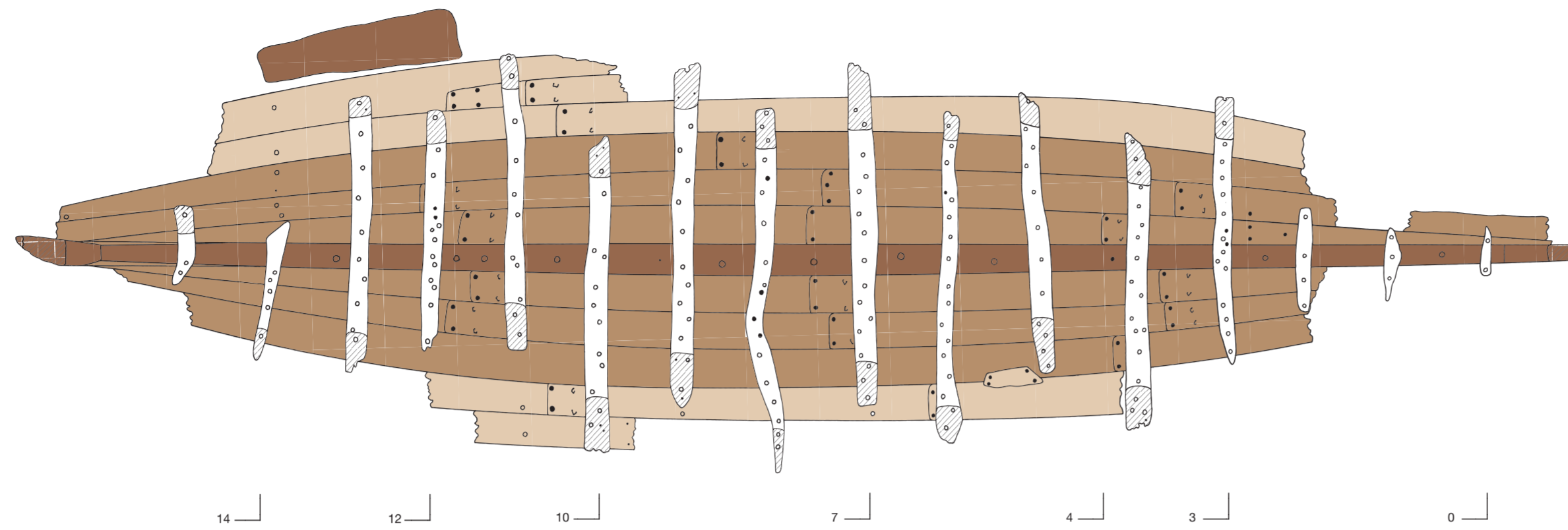
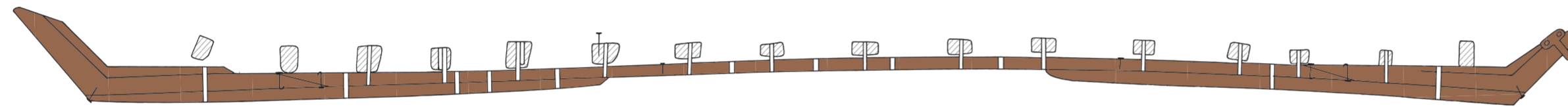


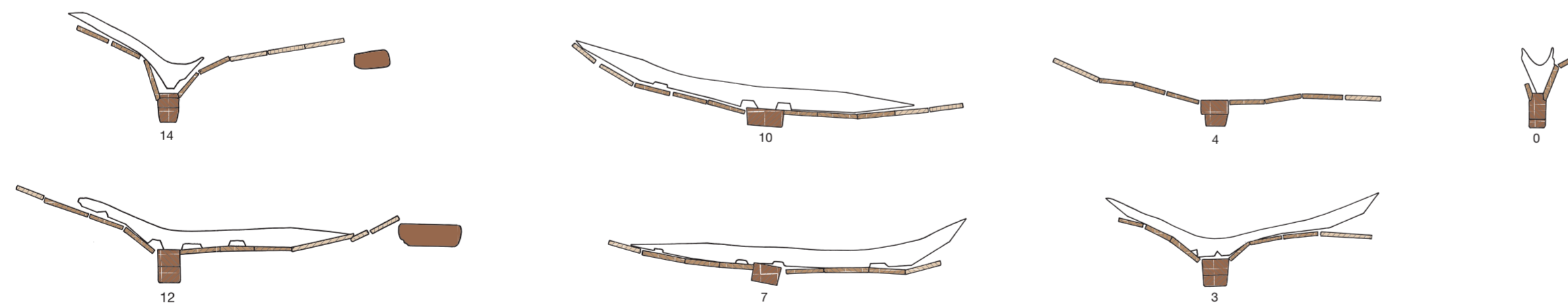
A. Top view



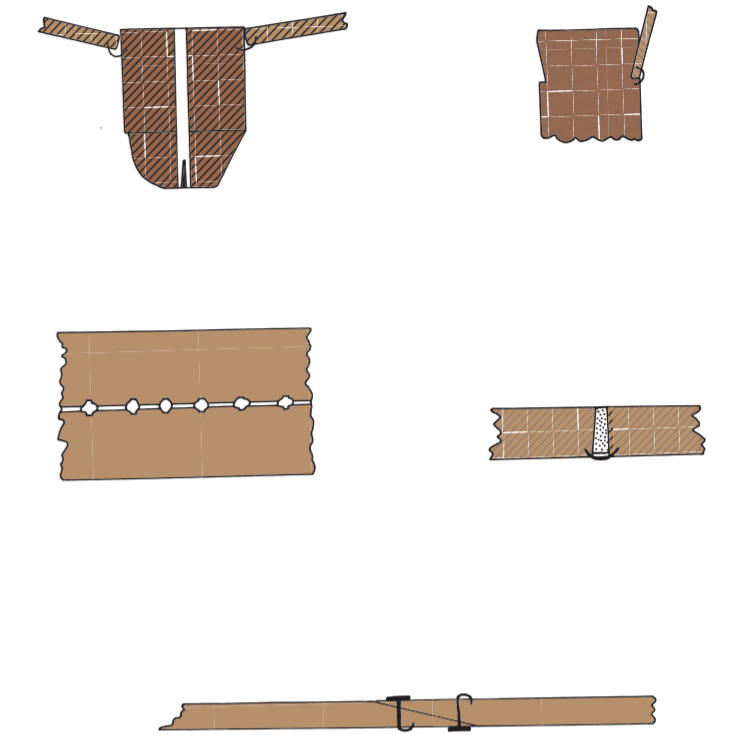
B. Longitudinal section










C. Cross-sections



D. Structural details



Legend

-  Keel plank, stern- and stern hooks, skegs, piece of driftwood
-  Bottom planking
-  Planking of the sides, repair plank
-  Frames
-  Moss caulking in a seam
-  Cross-cut wood
-  Frame number

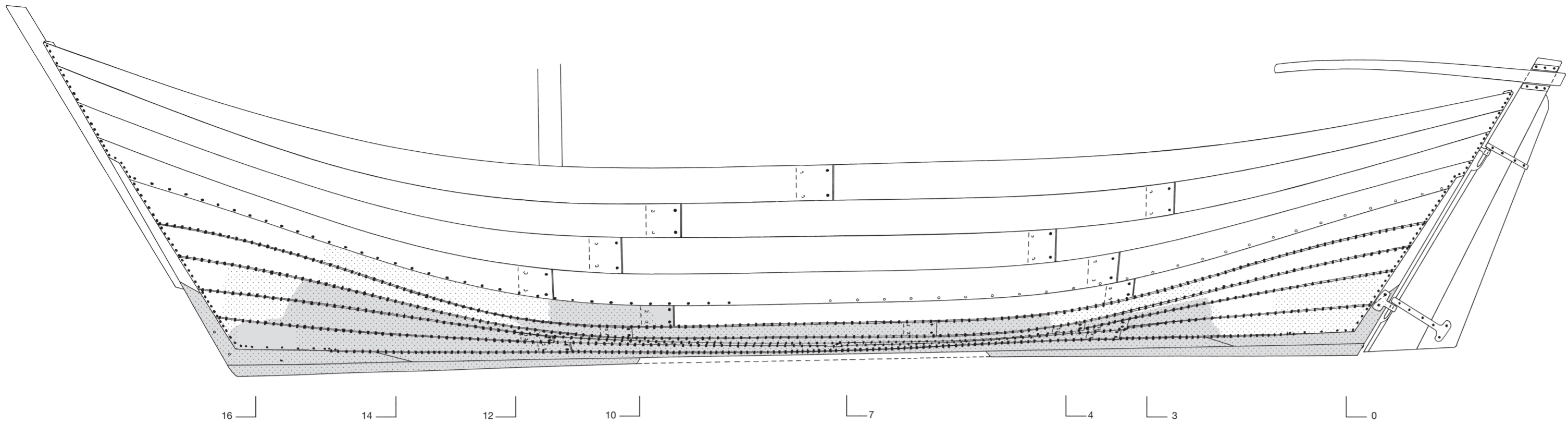
Field drawings

- A. Top view showing the frames.
- B. Longitudinal section of the keel plank, stern- and stern hooks, skegs and frames.
- C. Cross-sections.
- D. Structural details (not to scale).

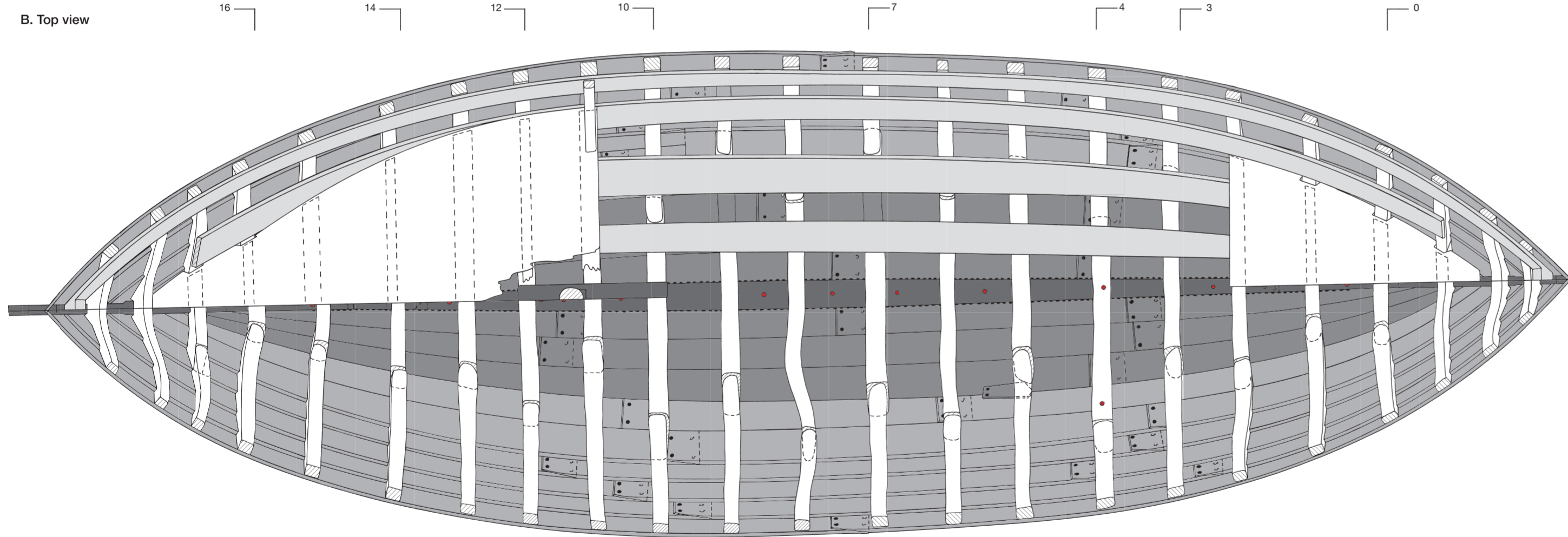
Scale



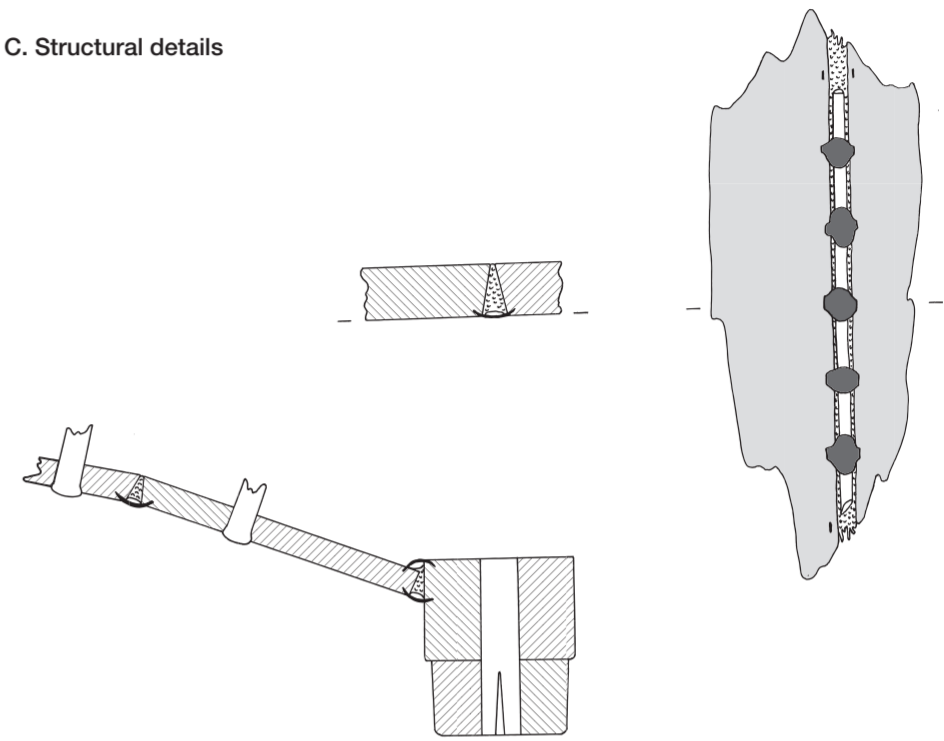
A. Exterior of the side



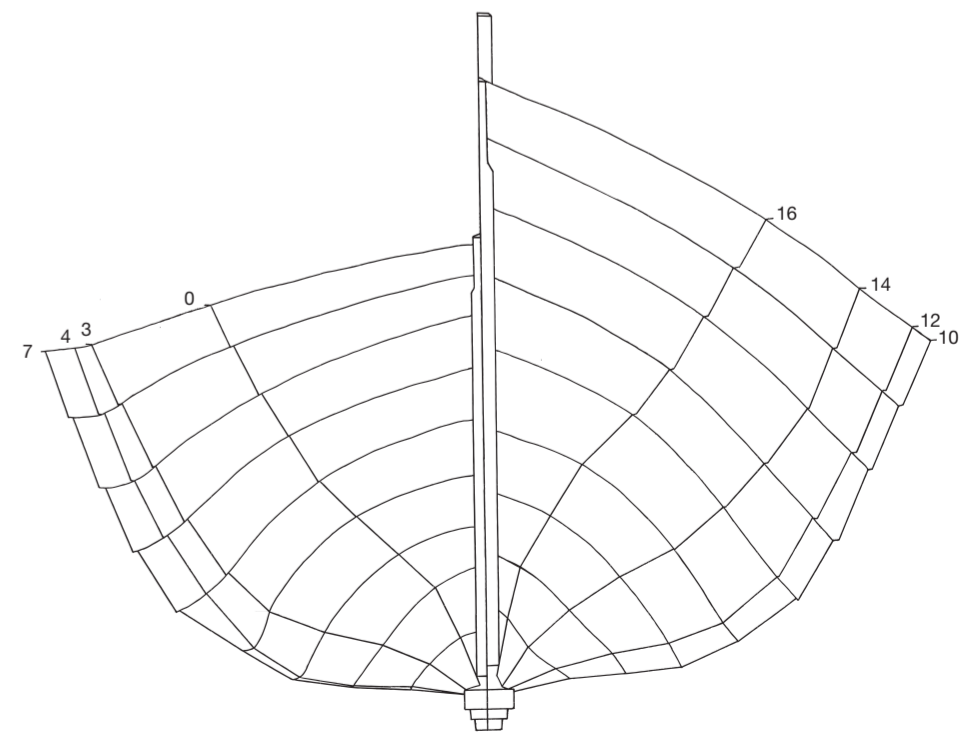
B. Top view



C. Structural details



D. Lines and planking drawing



Legend to A

- Recovered parts of the port side
- Recovered parts of the starboard side

Legend to B-C

- Keel plank, stern- and stem hooks, mast step, sintel clamps
- Bottom planking
- Ceiling boards, bottom planking (in C)
- Planking of the sides
- Frames, decks
- Cross-cut wood
- Treenails Ø 3 cm
- Frame number

Reconstruction drawings

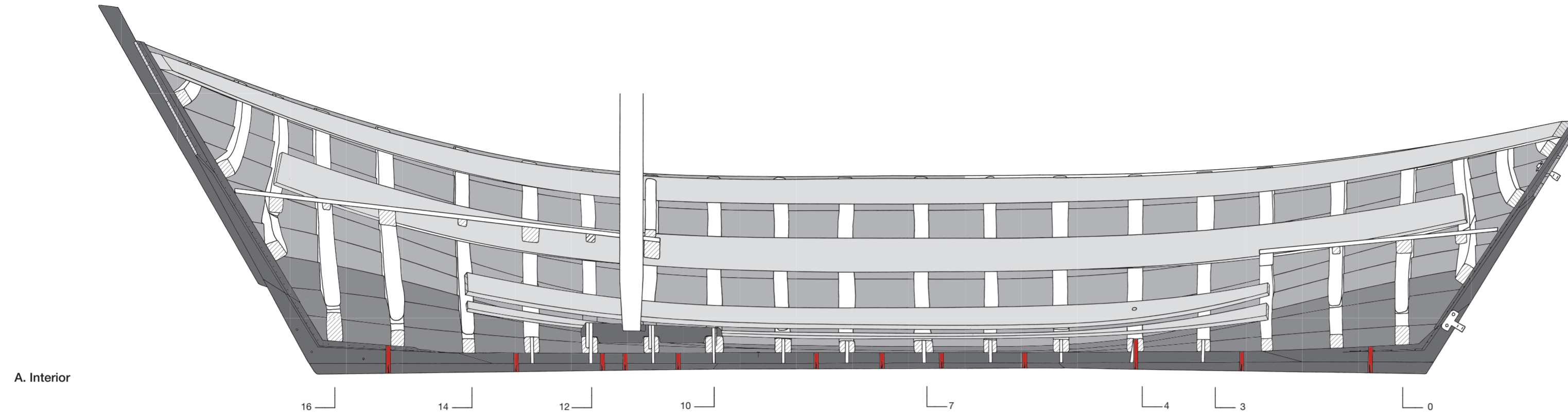
A. Exterior of the port side with the recovered parts of the keel plank, the stern- and stem hooks, the skegs with the connecting beam, and the shell planks. On the lower edge of strake F, the clinker fastenings are indicated with treenails in the afterbody; in the forebody, with iron nails. On the seams of the carvel-built underwater body, the moss laths visible on the outside and the sintel-clamp or sintel-nail pattern are shown.

B. Top view: with decks, mast step and ceiling boards (starboard), and the frames and planking plan (port).

C. Structural details: clamped moss caulking in the seams of the bottom, and between a garboard and the hook / keel plank; the beech treenail with oak wedge used for fastening the skeg; and treenails with slightly rounded heads proud of the shell.

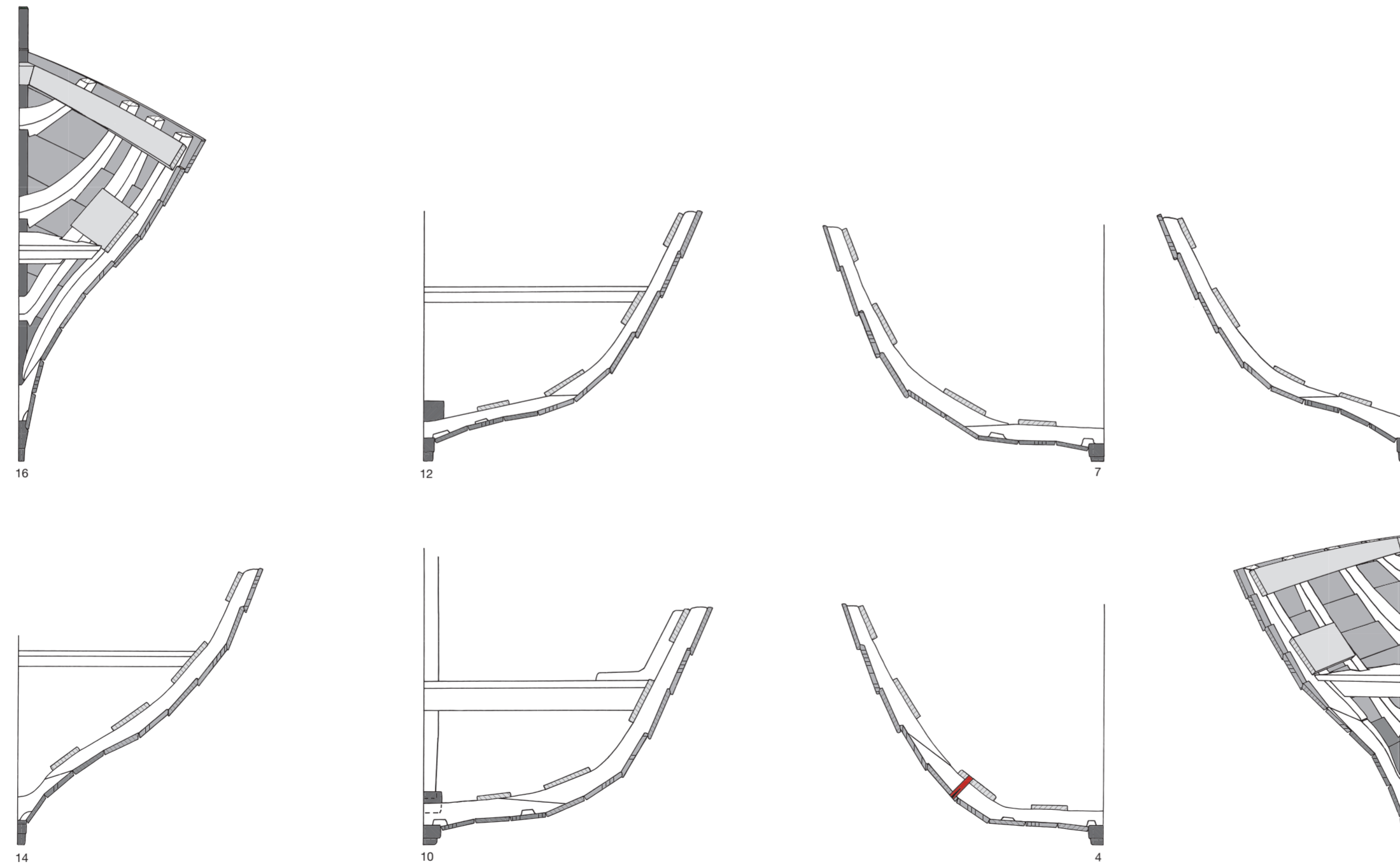
D. Lines / planking drawing of the upper edges of the shell strakes. On the right, the interior of the forebody with the positions of frames 10, 12, 14 and 16; on the left, that of the afterbody with the positions of frames 0, 3, 4 and 7.

Scale
0 m 1 m



A. Interior

B. Cross-sections



Legend

- Keel plank, stern- and stem hooks, mast step, skegs and false keel
- Bottom planking
- Planking of the sides
- Ceiling board; inwale; covering inwale
- Frames, decks
- Cross-cut wood
- Treenails Ø 3cm
- Frame number

Reconstruction drawings

- A. Interior of the starboard side.
- B. Cross-sections.
- C. Gunwales reinforced with a covering inwale of triangular section, with a covering inwale of quadrangular section, and with a ceiling board.

Scale

